

32-208-1403

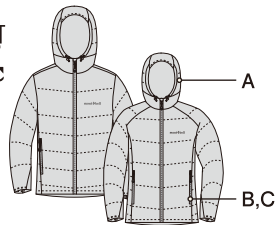


mont-bell

Thermawrap PRO

An optimal garment for Light & Fast™ technical users, the PRO is the latest version of our original synthetic parka. New for this year, we have optimized the fibers in the construction of EXCELOFT® to improve warmth and packability by 10%, while selecting a softer, quieter nylon that just happens to be lighter without compromising durability. Suited to a wide range of applications this parka leverages light-weight construction, 80 grams of high lofting hydro-phobic insulation, and wind resistant 20-denier nylon to yield the mid-weight warmth essential when tackling mixed or wet conditions. All backcountry adventurers, regardless of ability or specialty, will find the Thermawrap Pro critical in establishing the perfect layering system.

EXCELOFT
Ballistic



● Stuff sack included.

- A: 2-way adjustable hood
- B: Zippered hand warmer pockets
- C: Draw cords for hem adjustment hidden in pockets

32-208-1403

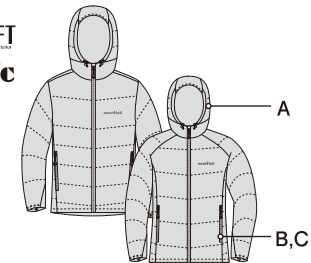


mont-bell

Thermawrap PRO

汗や湿気に強い中綿のエクセロフトを採用した、高い保温性を備えたパーカです。

EXCELOFT
Ballistic



- 軽量でコンパクトに収納できる素材を使用
 - シングルキルト構造
表地と裏地のつぶし縫いで軽量コンパクト化を実現し、中綿の片寄りも防ぎます。
 - ご家庭でも手軽に洗濯でき、お手入れが簡単です
- A 顔の周囲とひさしの上下二方向から調節可能なフード
B ジッパー開閉式のハンドポケットつき
C 裾のフィット感を簡単に調節可能